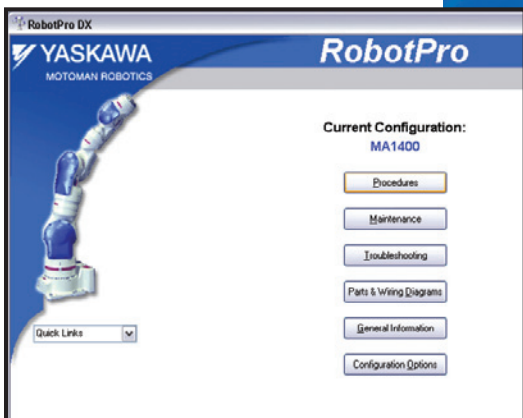


RobotPro DX

TROUBLESHOOTING • MAINTENANCE • PROCEDURES



RobotPro® DX is a PC-based expert system for performing alarm-code troubleshooting, robot preventive maintenance and repair procedures. It is the most comprehensive robot maintenance package available in the industry.

HIGHLIGHTS

Features

- User-friendly graphical user interface, effective step-by-step instructions, drawings, schematics, etc.
- Descriptive test and repair procedures with illustrative graphics.
- Preventive maintenance schedule with links to procedures.
- Interactive troubleshooting; series of questions used to determine cause of problem.
- Wiring diagrams.
- Illustrated parts list (not available for all models).
- Spare parts listing.
- Tailored to specific robot and controller models.
- AutoUpdate - software automatically updates to reflect changes to robot information.

Take the Guesswork out of Troubleshooting

- Immediate access to:
 - ▶ Wiring diagrams
 - ▶ Proper voltages
 - ▶ Component locations
 - ▶ Adjustment procedures
- Question/answer procedure – Approximately 50 percent of industrial downtime can be attributed to the troubleshooting process. RobotPro prompts you through a question/answer procedure to quickly identify the cause of an alarm or error, reducing downtime.

- Cause of problem – Once enough information is collected, RobotPro displays the cause of the problem and procedure(s) to correct it. Motoman Robotics' own field service representatives use these features to diagnose errors and alarms.

Maintenance Schedule

- Life cycle information – Specific preventive maintenance details are provided in a procedural format that covers daily inspection tasks through 36,000 operating hours.
- Checklists – Includes links to procedures and recommended maintenance dates based upon robot configuration.
- Maintenance records – Technicians can record maintenance activity performed on individual robot cells. Records can be exported in many formats for reporting purposes.

Preventive Maintenance

- Examples:
 - ▶ Lubricate robot axes
 - ▶ Inspect robot and controller
 - ▶ Replace wiring harness
 - ▶ Replace battery in controller
- Illustrated parts list – Provides ability to locate specific parts and part numbers. A maintenance schedule is available with detailed items for both the robot and the controller.

- Detailed procedures – Proper preventive maintenance maximizes the robot's uptime and production. RobotPro's detailed procedures and illustrations simplify maintenance to ensure that the robot remains in peak operating condition.

Simplify Repair Procedures

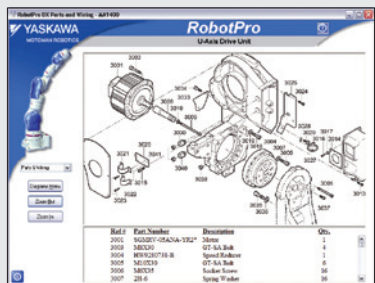
- Examples:
 - ▶ Motor replacement
 - ▶ Drive unit replacement
 - ▶ Encoder reset
 - ▶ Servopack replacement
- RobotPro provides the proper steps and detailed instructions to correct a problem. Part drawings, diagrams, schematic wiring drawings, parts lists, or photographs are accessible using hyperlinks. Easy-to-read color images are included.
- Since RobotPro is portable, you can easily use the software on a laptop near the robot to locate, review and use recommended repair procedures.

ARM YOURSELF

...RobotPro is an effective support tool that helps pinpoint problems and provides instructions to resolve them. It also provides useful graphics and instructions for proper preventive maintenance. As a result, the robot's uptime is optimized and repair costs are minimized.



MAINTENANCE RECORDS

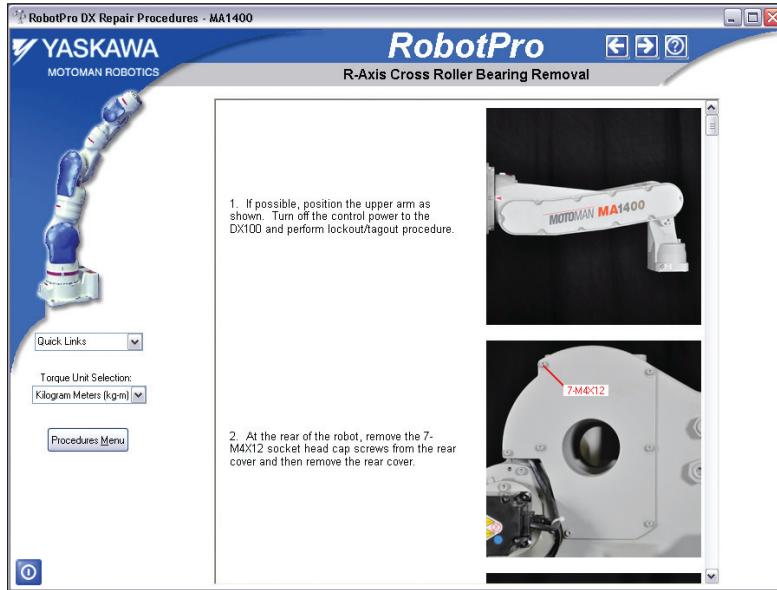


ILLUSTRATED PARTS LIST

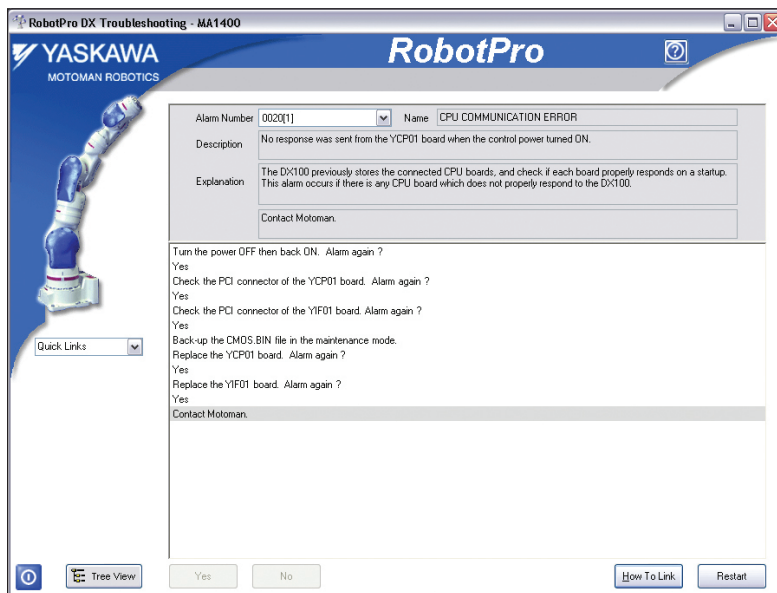
TOP 3 REASONS TO USE!

- Quickly identify problems through troubleshooting
- Repair robots with minimal training
- Maintain robots to minimize downtime

SCREENS



PROCEDURES



TROUBLESHOOTING Q&A

MINIMUM SYSTEM REQUIREMENTS

- PC with Pentium III equivalent or better
- 256 MB RAM
- >100 MB
- 16-bit color
- Mouse
- Windows® 7 or Windows XP

COMPATIBILITY

- DX100 controller

AVAILABLE ROBOT MODELS

- AutoSorter III
- MA1400
- MA1900
- MPL160
- HP20D
- MH5*

* Includes DXM100 controller only.